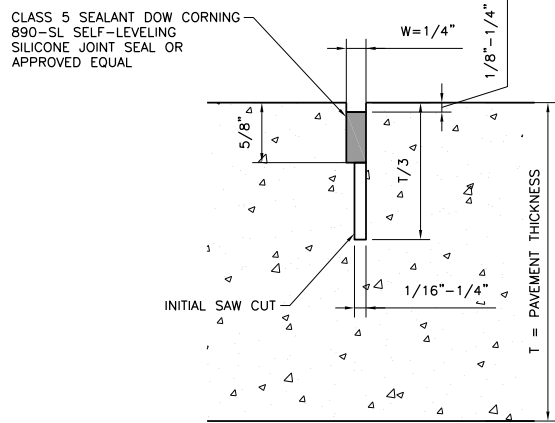


TYPICAL 6" CURB DETAIL

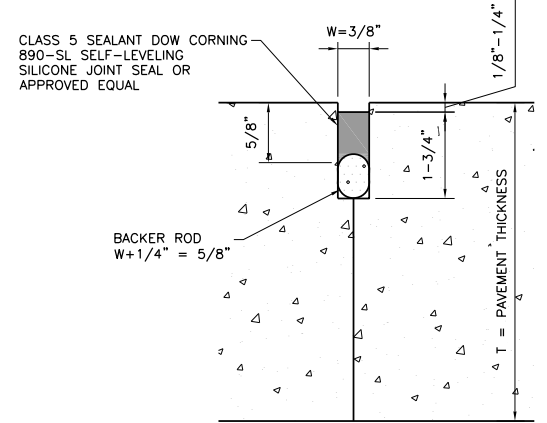
NOT TO SCALE

6" CURB NOTES:

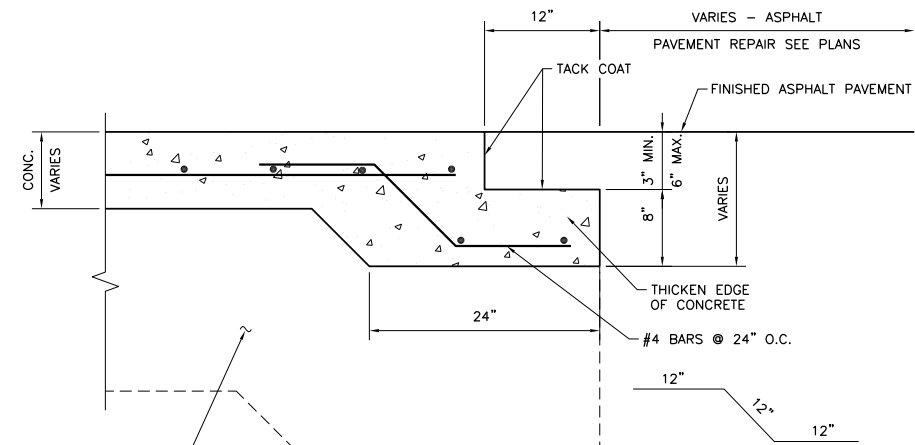
1. EXPANSION AND CONSTRUCTION JOINTS OF THE 6" SEPARATE CURB SHALL MATCH THOSE OF THE TIED SIDEWALK AND/OR CONCRETE PAVEMENT, AND SHALL NOT EXCEED 39' O.C. (MAX) SPACING.
2. TRANSVERSE GROOVES 1/8" WIDE BY 1/2" DEEP SHALL BE MADE AT 10' O.C. (MAXIMUM).
3. WHERE NEW CURB JOINS EXISTING CURB AND GUTTER, TRANSITION THE LAST 10' OF THE NEW TO MATCH THE OLD IN SHAPE.
4. EXPANSION JOINTS ON ALL SIDEWALK AND CURB SHALL BE REDWOOD. ALL JOINTS IN 6" SEPARATE CURB SHALL BE SEALED WITH JOINT SEALANT.
5. TRANSVERSE CONTRACTION JOINTS 1/8" WIDE BY 1/2" DEEP SHALL BE CUT IN ALL SIDEWALKS AT 5'-0" INTERVALS (MAXIMUM).



SAWED LONGITUDINAL JOINT



LONGITUDINAL OR TRANSVERSE CONSTRUCTION JOINT

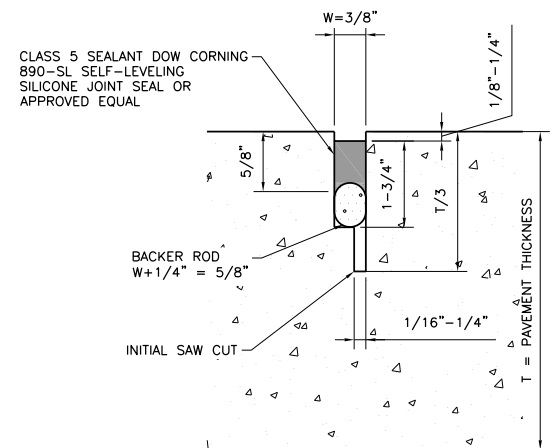


CONCRETE TO ASPHALT PAVEMENT SECTION TIE-IN DETAIL

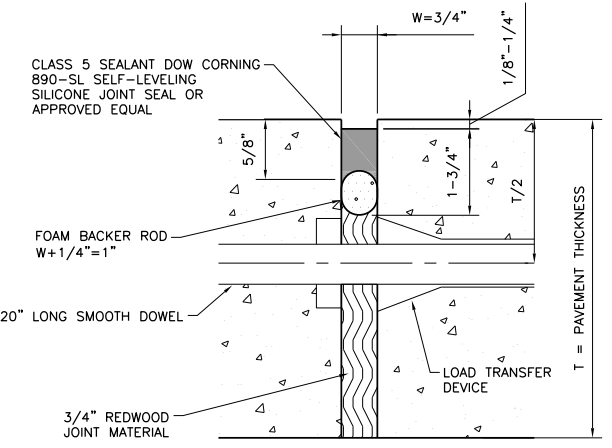
NOT TO SCALE

NOTE:

IN NO CASE SHALL THE THICKNESS OF THE ASPHALT OR BASE MATERIAL BE LESS THAN THE THICKNESS OF EXISTING ADJACENT MATERIAL.



TRANSVERSE SAWED CONTRACTION JOINT



EXPANSION JOINT


JOINT SEALANT COMPOUND

NOT TO SCALE

GENERAL NOTES:

1. THE LOCATION OF JOINTS SHALL BE AS SHOWN ELSEWHERE IN THE DRAWINGS.
2. THE JOINT RESERVOIR FOR SEALANT SHALL BE SAWED UNLESS OTHERWISE SHOWN ON THE PLANS FOR THE LONGITUDINAL AND TRANSVERSE CONSTRUCTION AND THE TWO SAWED JOINTS.
3. THE JOINTS SHALL BE CLEANED IN ACCORDANCE WITH THE SEALANT MANUFACTURE'S RECOMMENDATION. PRIOR TO BEGINNING OPERATIONS, THE CONTRACTOR SHALL SUBMIT A STATEMENT FROM THE SEALANT MANUFACTURER SHOWING THE RECOMMENDED EQUIPMENT AND INSTALLATION PROCEDURES TO BE USED.
4. THE SAW CUT FOR THE LONGITUDINAL JOINT SHALL BE ONE FOURTH THE SLAB THICKNESS WHEN CRUSHED LIMESTONE IS USED AS THE COARSE AGGREGATE.

REVISION NO.	DATE	BY	DESCRIPTION



CITY OF CORPUS CHRISTI TEXAS
Department of Engineering Services

CITY OF CORPUS CHRISTI
CONCRETE PAVEMENT
STANDARD DETAILS

SHEET _____ of _____
RECORD DRAWING NO.

CITY PROJECT # _____